

The REG Procedure
 Model: MODEL1
 Dependent Variable: prz

Number of Observations Read	157
Number of Observations Used	157

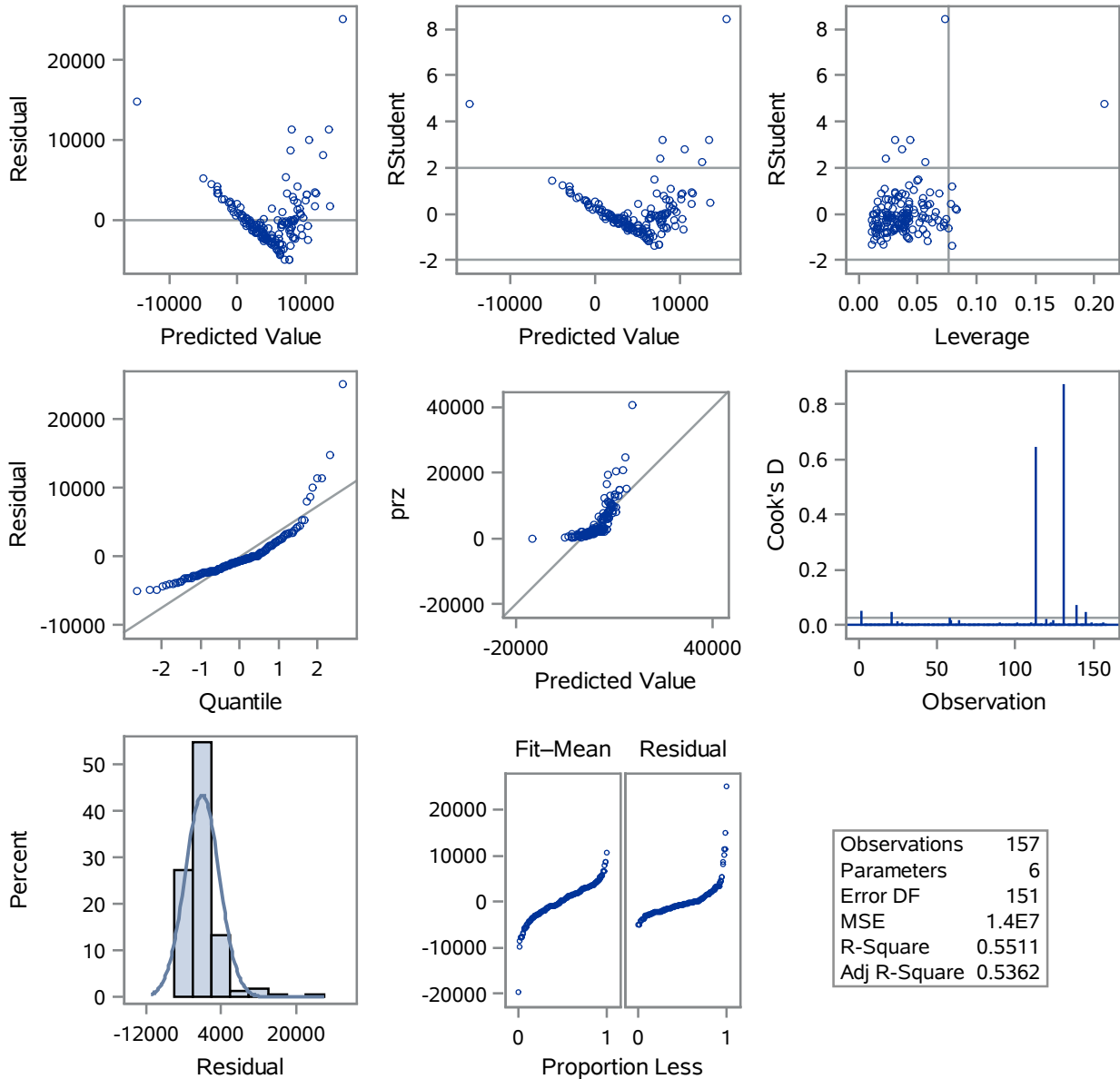
Analysis of Variance					
Source	DF	Sum of Squares	Mean Square	F Value	Pr > F
Model	5	2589596610	517919322	37.07	<.0001
Error	151	2109737002	13971768		
Corrected Total	156	4699333612			

Root MSE	3737.88285	R-Square	0.5511
Dependent Mean	4863.88535	Adj R-Sq	0.5362
Coeff Var	76.84973		

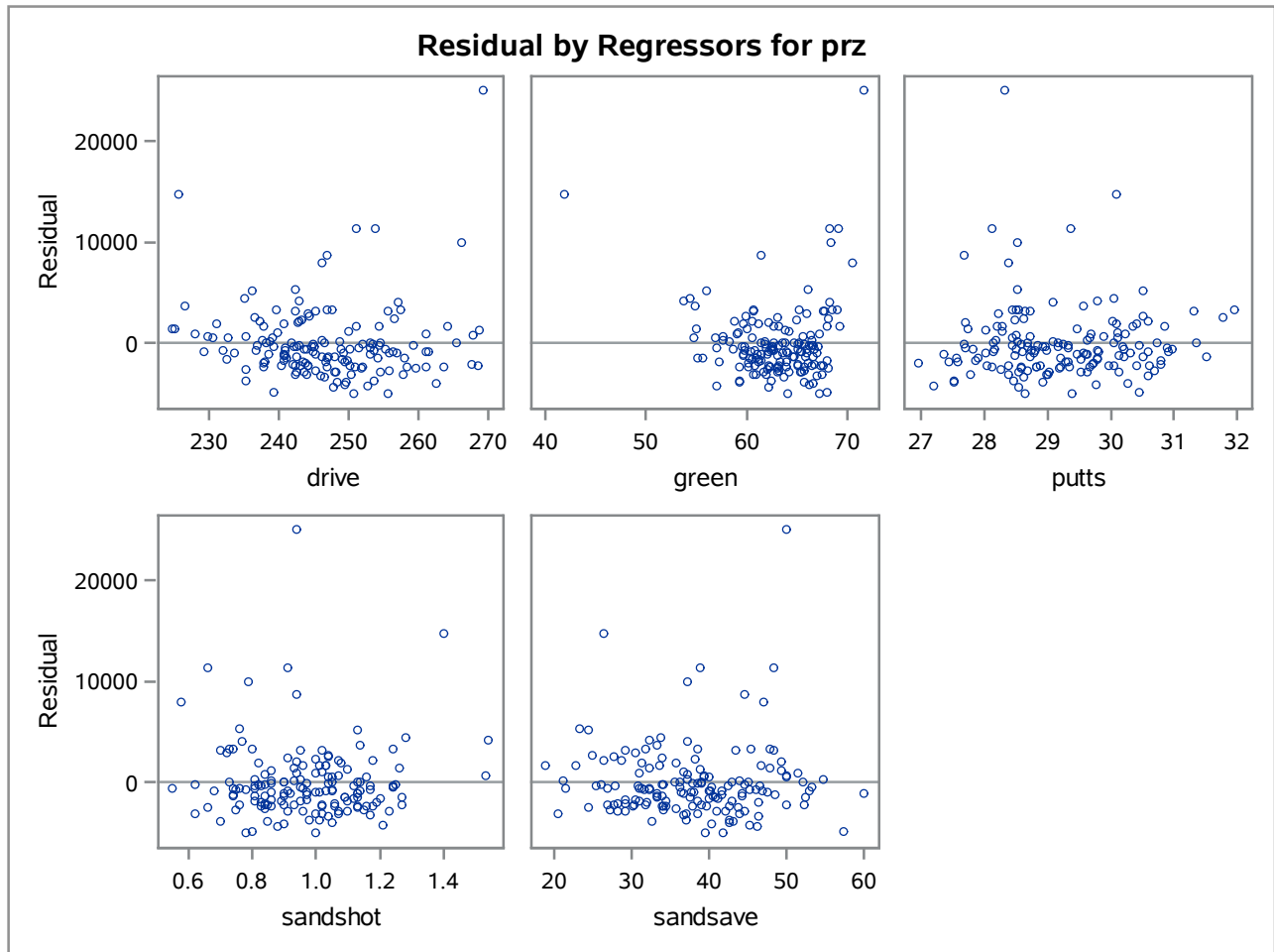
Parameter Estimates					
Variable	DF	Parameter Estimate	Standard Error	t Value	Pr > t
Intercept	1	14078	13366	1.05	0.2939
drive	1	12.08504	39.25761	0.31	0.7586
green	1	836.24378	111.84729	7.48	<.0001
putts	1	-2449.93812	318.07306	-7.70	<.0001
sandshot	1	3362.93201	2198.77649	1.53	0.1282
sandsave	1	90.68300	38.09269	2.38	0.0185

The REG Procedure
 Model: MODEL1
 Dependent Variable: prz

Fit Diagnostics for prz



The REG Procedure
Model: MODEL1
Dependent Variable: prz



The TRANSREG Procedure

